

## **FAO: Bishop's Council**

At Stockton Deanery Synod meeting 4<sup>th</sup> November 2019 the Deanery Plan was presented in the format you see here.

It was quickly identified by Synod that this document does not actually constitute a 'plan', because there is no indication of how or when the aspirations outlined in section 5 will be realized. Synod recognizes that in order for us to achieve our aspirations we need to create an implementation plan and are tasking a small group of synod members to devote the first few months of 2020 thinking this through and coming up with recommendations as to the next steps. This will include a review of our buildings, and emphasize growth and viability. Synod would like to see action to follow the discussion that has taken place over the past few years.

For this reason Synod could not pass this document as a 'Plan', but unanimously agreed to the document as a 'Review' of where we are currently.

# **Stockton Deanery** **Review**

**Update Autumn 2019**

**& Starting to Look Ahead 2020-2025**

**Agreed Deanery Synod 4<sup>th</sup> November 2019**

*Let us consider how we may spur one another on  
toward love and good deeds.*

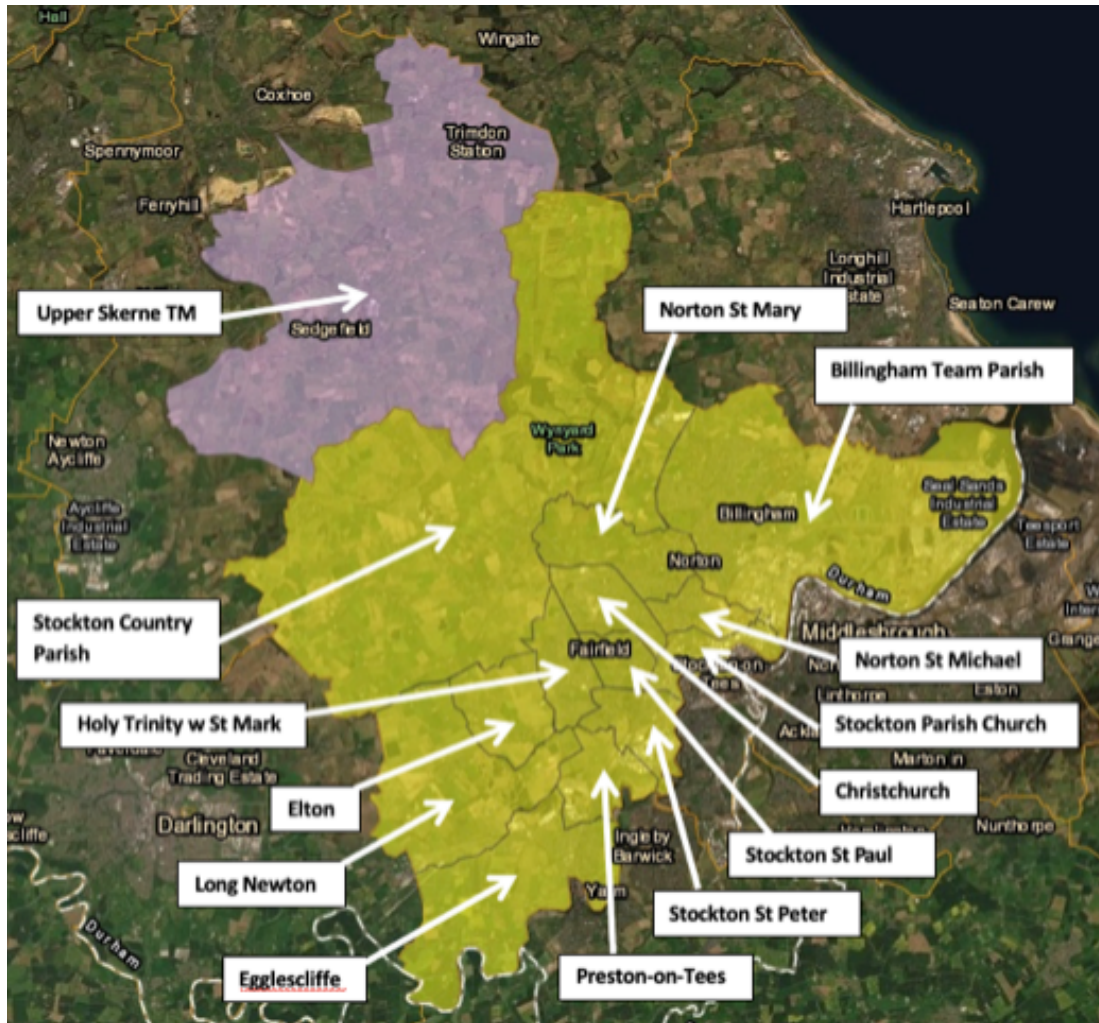
Hebrews 10 v 24

## Introduction

This document seeks to :

1. Celebrate how we have been blessed in the last few years as a Deanery;
2. Acknowledge some of the tough times;
3. Reflect on the Ministry and Vocation of all God's people;
4. State the agreed deanery deployment of stipendiary ministry as at 2020;
5. Start to look ahead into 2020-2025;
6. Share a snap-shot of activities being undertaken to support the Diocesan priorities;
7. Capture some recent financial and mission data.





1. **We are thankful over the last couple of years for:**

**Children and Young People**

- The growth we have seen in young people developing in their relationship with God
  - 9 young people attended the Walsingham youth pilgrimage in summer 2019
  - 62 young people went as a group to Soul Survivor summer 2019
  - Multiple thriving youth groups and regular youth services
  - 47 teenagers on the Young leaders course (Doulos) in partnership with Tees Valley Youth for Christ
  - Growing number of young people being confirmed
  - Participation of young people from Stockton Deanery on Youth Council
- Our continued partnership working with Tees Valley Youth for Christ
- Continuous development in children's work across parishes
  - Participation of children from Stockton deanery on Children's Council

- After school clubs and groups
- Open the Book teams developing in some parishes
- Increased uptake of prayer spaces in schools
- Many parishes expanding children focused services in some cases led by children
- Our engagement with many schools (not just C of E ones). The opening of a new school in Wynyard.
- The numbers of children and young people in our worshipping communities has grown from 2017 to 2018
- The great support and encouragement given to us from Sharon Pritchard and Andy Harris

### **Commitment to growth (numerical and spiritual) and planting churches across the deanery**

- Bringing into the Deanery our brothers and sisters in Christ from the Parish of the Upper Skerne – getting to know each other, praying together, sharing together
- The commencing and running of Theology for Everyone Course developed in partnership with Cranmer Hall.
  - Christians from across the Tees Valley coming together to learn from amazing speakers , having their understanding of the scriptures deepened
- Stockton Parish Church established as a resourcing church supported by central church (SDF) funding
- Discipleship courses being well attended
- Partnership for Missional Church - 4 parishes participated in first cohort of PMC delivering transformational change in developing lay leadership and mission.
- Development of leadership through PMC and other programmes, in many of our parishes, including new ministries bubbling up as people discern God’s call on their lives
- Starting to see vocations forthcoming for ordained and authorised lay ministries. Thankful for the support of Alastair Prince
- Thankful for the missional leadership of our clergy and for new clergy coming to the Deanery

## Poverty

- The wide range of activities where churches are working in their communities to bless those in need including;
  - We are particularly proud of the Billingham ladies getting to meet Jamie Oliver and have their ministry of summer lunch clubs in Port Clarence recognized;
  - Holiday hunger clubs established, places of welcome being run in many parishes;
  - retired people luncheon clubs;
  - ESOL cafes.
- Food banks supported across the Deanery including Trussel Trust's within St. Michael & All Angels (an outworking of Partnership for Missional Church); Churches Together in Parkfield hosted at Salvation Army Citadel;
- Our churches' response to Stockton being a major dispersal area for asylum seekers. Enabling positive relationships between churches, community organisations and authorities. Farsi services, some parishes driving engagement for justice for asylum seekers

## **& thankful for stuff that doesn't neatly fit in one of the above three headings....**

- The chaplaincies at our local hospital (North Tees) and other units, at Holme House Prison and the contribution that the chaplains there make to the life of Deanery
- Development of some of our buildings to make them fit for mission and ministry in 21<sup>st</sup> century particularly the modifications at Holy Trinity with St Mark, modifications to All Saints', development of plans for St Peters', development of plans for St Pauls'. Adapting church buildings for flexible community space.
- Our continued positive engagement with the civic authorities in Stockton Borough Council
- The increased partnership working of churches of all denominations across Tees Valley eg Transforming Teesside Together, Town pastors

## 2. Acknowledging the Tough Times

Struggled to recruit stipendiary ministers including:

- The Billingham Parish (newly formed in 2013) experienced an inability to recruit to the team rector role following the first post-holder moving on. This post remains vacant as at autumn 2019 and we are grateful for the ministry of Revd Paul Johnston (as an associate minister on fixed term contact)
- The Parish of Upper Skerne experienced a long interregnum. We are thankful that the Lord brought both Revd Geoff Short and Revd Elizabeth Bland to minister in this parish.
- The Parish of ChristChurch and St Pauls' spent time discerning the way forward as vacancies arose in each of them, we are thankful that the Lord brought Revd Jennie Sharpe to minister in Parish of Christchurch, and St Pauls' will welcome Revd Paul Arnold.

Decisions to close church buildings:

- St Marks Stockton closed and the new parish of Holy Trinity with St Marks was formed a few years ago. The church building has now been demolished but the Christian family has flourished, most joining the new parish.

Decisions to join parishes together:

- Five rural parishes on the western side of the Deanery joined together in 2014 to form the Country Parish.
- Five parishes in Billingham joined together in 2013 to form the Billingham Team Parish
- Three parishes in Stockton (St James, St John's, and St Chad's) came together in 2015 to form the Parish of Christchurch. The congregation worshipping as St James coming into the new parish and leaving the building it had shared with the Methodist Church (St Andrew's Methodist)
- All of these structural changes have required grace, understanding, hard work on structures and bringing people together, and the underpinning of prayer. We acknowledge that change is not always easy.

### 3. **Reflections on Ministry and Vocations of all God's people**

As the People of God in Stockton, we seek to journey together in growing our faith, growing God's Church, and growing our engagement in his mission. We recognise that this journey requires us to be disciples, and to be a church that makes and grows new disciples. Our baptismal vocation to discipleship manifests itself in the calling of God on each Christian life, and we have a key role in discerning together what are the ministries to which God is calling his people, both corporately and individually.

Historically (in the largely imagined past that many people think they remember), the vicar did everything. This has never been true, but it has been truer than it is today. There are many ministries which have been traditionally part of the parish priest's role, but which in fact never had to be, and no longer ought to be - not just because clergy numbers are reducing, but also because God wants to see his people set free to exercise the consequences of their baptism!

The Setting God's People Free process calls us to be about empowering, encouraging and equipping the whole people of God. When we consider the laity, there will be some who are called to the licensed, commissioned and formally recognised ministries (Reader, APA, Licensed Funeral Minister, etc) - and a greater number who are called to a wide range of locally authorised, locally commissioned ministries.

We already have a number of people exercising authorised/licensed ministries, and will continue to encourage people to explore vocation and ministry in these areas, as well as ordained ministry. But alongside this, we want to see more roles being inhabited by lay people, celebrated and recognised by God's people as authentic and valued ministries of, and on behalf of, the (local) church.

We have developed, in partnership with Cranmer Hall and local ecumenical colleagues, our Theology for Everyone programme, as a school of theology for the deanery and surrounding area. We are looking at what else might be available or be developed, as encouragement and training for various lay ministries - whether these are diocesan programmes, or off-the-shelf packages from organisations like CPAS etc, or things we develop locally. We want to see training which helps people explore, develop and discern ministries which they are trying out - not expecting people to undertake 'learning the theory' before engaging in the practice.

In our parishes, there are a number of key people who exercise effective ministries alongside their clergy in all sorts of areas, often taking on an oversight role. We would like to see these key leaders supported and networked, so that good practice and encouragement can be better shared across the deanery. It may be that a deanery portfolio for mission/ministry in a particular area could be held by these key lay leaders - eg Children / Young People, Refugees & Asylum Seekers, etc.



#### **4. Deployment of Diocesan funded posts**

At 2016 the number of stipendiary posts allocated to Stockton Deanery was 11.5. In the subsequent allocation exercise Stockton Deanery was allocated 10 posts (to be reached by 2020).<sup>1</sup> In 2018 the parishes of Stockton Deanery came together with the parish of Upper Skerne to form a new Stockton Deanery. Upper Skerne then appointed 1.5 funded posts.<sup>2</sup>

At present all the Diocesan funded posts in Stockton Deanery are stipendiary clergy however the Deanery remains open to the possibility that in the future a post might be filled by a lay worker.

The Deanery would like to acknowledge the ministry provided by those who hold permission to officiate (PTO), mostly retired clergy and those who serve in an SSM capacity. Without their continued service and ministry the allocation of stipended posts as laid out would not be possible.

Whilst focussing on stipended posts the Deanery continues to develop non-stipended and lay ministries and this focus on stipended posts recognises the increasing role that lay ministries have in sharing the good news.

The Deanery continues to seek to be creative and imaginative in how ministry of all kinds is developed and deployed in relationships across the Deanery.

##### **4.1: ChristChurch and St Paul's Newtown**

During 2017-2018 discussions were held about how deployment would operate between ChristChurch and St Paul's Newtown. It was felt that given the population size and opportunities for ministry in the combined parishes an allocation of at least 1.5FT was required, ideally 2FT if numbers permitted. The 2FT would split their time between both Christchurch and St Paul's.

In this discernment process the possibility of All Saints' Preston, with support of other parishes, planting into St Paul's was brought into the conversations. To this end the vacancy at ChristChurch was filled with 1FT and a curate sought to come to the Deanery for their training at All Saints' Preston and then plant out into St Paul's. In supporting this trajectory the Deanery was cognisant that in the theoretical allocation St Paul's would only receive 0.5FT post. This church planting trajectory is now captured in the Stockton element of SDF Resourcing Church bid being submitted in late 2019. The Deanery is committed to support this church planting venture so in the event that the bid is not successful the commitment by the Deanery and Diocese to support 1FT at St Paul's in the short to medium term remains as the church plant takes root.

##### **4.2: St John's Egglecliffe**

St John's Egglecliffe is currently blessed by the ministry of Revd Sylvia Wilson, 0.5FT self supporting minister (SSM). When the time arrives for this ministry to come to an end in that parish, there are a number of options available within the Deanery allocation number to support ministry in Egglecliffe. The Deanery allocation has scope to support 0.5FT although the Deanery would want to explore with the parish, at this time, options for collaborative working with other parishes. It is also

---

<sup>1</sup> As per data shared Bishop's Council 8/12/16 and approved [10.1 rounded down to 10]

<sup>2</sup> Assumption based on 2018 appointments.

a post that could be made 1FT if coupled with other duties. The Deanery believes that it is helpful to retain this degree of freedom in how ministry will be provided in Egglecliffe.

#### **4.3: Other considerations in the future:**

a. Allocating part of a post to the Area Dean role

The allocation as laid out does not carve out part of a role to support an area dean. This would be desirable but is difficult to plan in as we do not wish to restrict which parish an area dean is/can be appointed to. A 0.5FT of the unallocated posts could be used to backfill for the area dean if felt appropriate.

b. Strategic Development Fund (SDF) Resourcing Church – Stockton Parish Church

Stockton Parish Church is an SDF supported Resourcing Church, from January 2019. The deanery allocation of Diocesan funded posts does not assume any additional requirements from Stockton Parish Church arising out of the resourcing church programme (ie next 5 years).

c. Shared posts

The Stockton Deanery lies on the north side of the Tees Valley, increasingly the churches across the Tees Valley seek to minister collaboratively eg via Transforming Teesside Together. The Deanery remains open to a part-post being coupled with a part-post outside of the confines of the parish model (for example chaplaincy, focussed ministry eg refugees and asylum seekers etc)

d. SDF Resourcing Church bid

Part of the second phase of SDF bids will include a bid from Stockton (All Saints') to support church planting, initially in collaboration with St Paul's but going on to include other opportunities including Wynyard School. The deanery allocation of Diocesan funded posts does not assume any additional requirements arising out of this resourcing work EXCEPT that the post supporting St Pauls will be filled by 1 FT rather than 0.5FT as per the Deanery allocation whilst the plant roots.

e. House for Duty (HFD)

At Autumn 2019 there is one house for duty (HFD) curate post in the Deanery linked to St Michael's and St Mary's Norton (the role holder also has employment in an NHS hospital chaplaincy role). The Deanery would wish to continue to work with the Diocese to explore the use of HFD. The Deanery has a number of opportunities such as sector ministries (major hospitals, prisons, or other contexts) as they develop and HFD to be an option.

f. Youth and Children

in the past the Deanery has employed a Deanery wide children's worker from its own funds (gifted from parishes within the Deanery). The Deanery is open to exploring this model again in collaboration with the Diocese and other funders.

Parish Groupings	Pop 2017	IMD (out of 12,425)	Worship bds (owned)	Share Pledge 2019	Share Pledge 2020	Allocation 2020	Diocesan Funded Stipend at 10/19	Comments - as at autumn 2019
Upper Skerne	15,546	6,719	5	£76,046	£80,000	1.5	1.5	Filled by 1Ft and 0.5FT
St Mary's Norton St Michael & All Angels Norton	11,045 9,864	6,702 612	2	£44,810 £12,151	£46,266 £12,879	1	1	House for Duty (HfD) supporting St Michaels
Billingham	37,127	2,532	5	£84,000	£77,000	2	2	Currently filled by 1FT and 1 associate priest on fixed term
Stockton Parish Church	6,638	36	1	£32,318	£35,550	1	1	SDF Resourcing Church - phase 1
Holy Trinity with St Marks	15,713	8,968	1	£58,433	£61,355	1	1	Filled by 1 FT
ChristChurch	19,499	348	2	£19,000	£19,950	1	1	Filled by 1FT
St Paul's Newtown	8,810	1,248	1	£8,000	£8,500	0.5	0	See note 4.1 , SDF plant planned
Stockton County Parish	5,746	8,981	5	£22,500	£35,550	1	1	Filled by 1FT; SDF plant into Wynyard
St Peter's, Stockton St John's, Elton	12,303 341	1,328 9,123	2	£68,256 £8,412	£71,669 £8,844	1	1	Filled by 1FT
St John's Egglecliffe	7,479	11,460	1	£37,500	£38,175	0.5 tbc	0	Currently filled 0.5 FT SSM (note4.2)
All Saint's Preston St Mary's LongNewton	3,029 892	9,298 8,848	2	£96,642 £15,797	£101,475 £16,590	1	1	Filled by 1FT ; All Saints' is earmarked to be SDF Res.Church
To be deployed as strategically agreed between DSMPC and Diocese						0.5	tbc	See note 4.3
	154,032			£583,935	£608,213	12.0	10.5	
					4.16%			

## **5. Looking ahead 2020-2025 - Where might we be in five years?**

- We will have increased resources to raise up and train lay leadership across the Deanery. Lay people will be more involved in children's and youth work, families' ministry, ministry to retired people, funeral ministry, home communion, pastoral care, worship ministry, messy church. The possibilities are endless!
- We will have a team of clergy - including retired ministers - committed to working together to forward God's kingdom.
- We will probably have fewer church buildings, to concentrate resource on ministry not buildings.
- We aim to have thriving congregations in each parish, with growing churches.
- The Church will continue to support what is good in our area, and we will play a large role in supporting those vulnerable in society.

### **Some of the questions we are starting to ask ourselves and pray about together – How do we....**

- Build on Waymark and continue our pilgrimage together?
- Continue to be a prayerful people, growing in discipleship each day?
- Strengthen our engagement ecumenically – can our buildings be used more creatively across different traditions and ecumenical partners?
- We are blessed to be part of Tees Valley as well as the Diocese of Durham – how do we develop our work with churches, communities and civic partners in transforming Tees Valley?
- Resourcing Church Programme is a blessing to our Deanery – how do we support the Resourcing Churches to support the church plants and other activities to grow and mature?
- Deepen our work with schools - develop pioneering reflections of missional communities?
- Change how we operate to open up opportunities for our young people to take their rightful role in leadership across our churches and structures?
- Support each other to deliver building projects that support mission and ministry - particularly in the near term at St Peters, All Saints' , St Paul's.
- Support each other to loosen our ties to physical structures and close buildings that are too costly to run and consolidate into other buildings?
- Continue to embed and strengthen our safeguarding practices so our church is a safe place to be?
- Continue to be generous givers and mutually support each other?
- Be good stewards of God's creation and live responsibly and sustainably?

6. **Parish Activity at summer 2019**

Parish	Growing in Discipleship	Growing Churches	Nurturing Young People	Addressing Poverty
St Peter and Elton	<ul style="list-style-type: none"> <li>• Waymark Lent Course</li> <li>• Preaching</li> <li>• Bible Study Group</li> <li>• Prayer Groups</li> <li>• Thy Kingdom Come</li> <li>• Walsingham pilgrimages</li> <li>• PMC process continuing</li> </ul>	<ul style="list-style-type: none"> <li>• 'Way Forward' plans for St Peter's building</li> <li>• Baptism and Wedding preparation encourages engagement</li> <li>• Outreach activities around social events</li> <li>• Welcome &amp; Hospitality</li> <li>• Nurture Courses</li> <li>• Personal invitations</li> </ul>	<ul style="list-style-type: none"> <li>• Toddlers' Praise</li> <li>• Messy Church</li> <li>• Open the Book</li> <li>• Holiday Club</li> <li>• St Peter's Pilgrims Youth Group</li> <li>• Walsingham Youth Pilgrimage</li> <li>• School assemblies and other engagement</li> <li>• Child-focussed services around Advent/Christmas and Lent/Easter</li> </ul>	<ul style="list-style-type: none"> <li>• Foodbank</li> <li>• ESOL Café</li> <li>• Clothing bank</li> <li>• Café Church</li> <li>• A Way Out project with street workers</li> <li>• Holiday Hunger project</li> <li>• Refugee &amp; Asylum Seeker work</li> <li>• Stockton Poverty Truth Commission</li> <li>• DePaul Nightstop</li> <li>• Safe Families for Children</li> <li>• Discretionary Fund</li> </ul>
Christchurch	<ul style="list-style-type: none"> <li>• Waymark Lent Course</li> <li>• Renewal of preaching permissions to encourage lay involvement</li> <li>• Midweek Communion now</li> </ul>	<ul style="list-style-type: none"> <li>• Vision morning booked</li> <li>• Plan to provide a variety of service styles</li> <li>• Baptisms moved to within cafe church services</li> </ul>	<ul style="list-style-type: none"> <li>• Children's work now within main body of the church rather than separate room</li> <li>• Young people involved in services</li> </ul>	<ul style="list-style-type: none"> <li>• Foodbank</li> <li>• Hope project providing safe place for the lonely</li> <li>• Plan for 'Summer Sanctuary Drop-In' providing a safe space and direction to appropriate services</li> </ul>

	involves Bible study and discussion			
Preston on Tees	<ul style="list-style-type: none"> <li>• Increase in number of midweek Life Groups</li> <li>• Life-related Bible teaching from growing team of excellent preachers</li> <li>• Participation in <i>Thy Kingdom Come</i></li> <li>• 25 people going to New Wine United</li> </ul>	<ul style="list-style-type: none"> <li>• Preparing to send team of 30 to new church plant in Newtown (Easter 2021)</li> <li>• Alpha</li> <li>• Plans to expand the building to accommodate increase in numbers</li> </ul>	<ul style="list-style-type: none"> <li>• Vibrant youth work including internship, leadership training, Soul Survivor, town-wide youth service</li> <li>• School assemblies in two primary schools and one secondary</li> <li>• Messy Church (8 x per year)</li> <li>• Play and Praise (weekly toddlers' outreach; puppets, Bible story, play)</li> <li>• Camp of Champions summer outreach (primary age)</li> </ul>	<ul style="list-style-type: none"> <li>• Year-on-year increase in giving and therefore mission spend</li> <li>• Monthly lunch club for retired people addressing loneliness and isolation</li> <li>• Support for Mary Thompson Fund (foodbank for asylum seekers)</li> <li>• Hardship fund to assist people in need (administered through pastoral team)</li> </ul>
Long Newton	<ul style="list-style-type: none"> <li>• Waymark Lent Course</li> <li>• Weekly 'Tuesday at 10' Bible Study and Home Groups</li> <li>• Prayer Ministry training</li> <li>• Participating in <i>Thy Kingdom Come</i></li> </ul>	<ul style="list-style-type: none"> <li>• Creative adaptation of main Sunday service to attract younger congregation</li> <li>• Appointment of 'focal leader' to release Incumbent for more strategic oversight</li> <li>• Vision Day planned for November to pray about/plan for</li> </ul>	<ul style="list-style-type: none"> <li>• Setting aside and furnishing side-chapel for growing Sunday morning children's work</li> <li>• School Assemblies weekly</li> <li>• Weekly 'Little Ted' toddler group with Christian input</li> <li>• 'Godzone' interactive school service twice-termly</li> </ul>	<ul style="list-style-type: none"> <li>• Monthly Community Lunch addressing loneliness and isolation</li> <li>• Year-on-year increase in giving and therefore mission spend</li> <li>• Financial and groceries support for Moses Project (practical help for men with addiction)</li> </ul>

		growth in next five years	<ul style="list-style-type: none"> <li>Messy Church</li> </ul>	<ul style="list-style-type: none"> <li>Drop In coffee morning weekly</li> </ul>
Norton St Michael & St Mary	<ul style="list-style-type: none"> <li>ongoing engagement of Lay people in both churches working on Vision, leading services, chairing PCC, over-seeing aspects of parish ministry: much as a direct result of PMC process</li> <li>community input includes Norton Foodbank, Dementia Café, developing strong links with Business and Village associations</li> <li>ongoing presence and ministry in Nursing/residential homes, Schools, Pastoral visiting</li> <li>partnership working with Businesses, Daisy Chain, Thirteen, SBC, Butterwick, Norton Cricket Club</li> </ul>	<ul style="list-style-type: none"> <li>monthly cafe church</li> <li>Holiday club &amp; Toddler outreach leading to regular 'Messy Church' e.g. Trunk or Treat, Prayer Spaces</li> <li>use of Pilgrim and 'Exploring God' discipleship resource material for all Baptism families &amp; Confirmation prep</li> <li>use of Youth Alpha with Junior Baptism Prep</li> <li>pilot of Archbishop's Reconciliation Team resource for churches (June 2019)</li> <li>missional 'events' e.g. Curry &amp; Carols, St Patrick's luncheon, Christian Aid ceilidh to widen discipleship focus</li> <li>monthly Reading Group and monthly</li> </ul>	<ul style="list-style-type: none"> <li>YFC input across 2 parishes: 2 Gap years and Part-time paid youth/schools worker</li> <li>UK-USA Mission Teams twice per year working on schools &amp; families outreach in partnership</li> <li>'Holiday Hunger' clubs during 6 weeks, and every half-term</li> <li>Flourishing Toddler Groups and Messy Church</li> <li>School Assemblies, RE lessons, Festival services, After-school outreach with YFC: contact with every school in Norton</li> <li>weekly Friday discipleship 5-11's and 11-18's at the Parish Hall</li> </ul>	<ul style="list-style-type: none"> <li>working with CAB, Coop, Trussel Trust, Church Urban Fund, Communities Together, A Way Out, Moses Project, SBC</li> <li>weekly Norton Foodbank at St Michael's (rota over 35 volunteers from CtOG &amp; beyond)</li> <li>monthly 'Drop-in' cafe for Elderly and regular lunch clubs</li> </ul>

	two Parish Prayer away days to Brancepeth, and weekly Tuesday prayer meeting. St Marys open throughout ThyKingC	<p>Healing &amp; Anointing Service = outreach and ministry</p> <ul style="list-style-type: none"> <li>• using Parish Giving Scheme, annual focus on Legacy giving, Budget setting with both PCC's, Grant applications</li> </ul>	<ul style="list-style-type: none"> <li>• weekly lunch club at Ian Ramsey</li> <li>• Input of clergy and parishioners on School Governing Bodies</li> </ul>	
Upper Skerne TM	<ul style="list-style-type: none"> <li>• Emphasis on discipleship in Sermons</li> <li>• Lent Course followed the Waymark material</li> <li>• Hope to start Alpha in the Autumn- problem no money for materials</li> <li>• Increased contact with youth organizations in Sedgefield</li> </ul>	<ul style="list-style-type: none"> <li>• Alpha</li> <li>• Starting Messy Church-money is a problem.</li> <li>• Participating in Thy Kingdom Come</li> </ul>	<ul style="list-style-type: none"> <li>• School Assemblies in two state schools.</li> <li>• Renewed links with Bishop Middleham School</li> <li>• Attempts to bring youth organizations into church rejected by PCC- disappointment.</li> <li>• Lots of embryonic plans</li> </ul>	<ul style="list-style-type: none"> <li>• There is rural poverty and post-industrial poverty but this not always acknowledged</li> <li>•</li> </ul>
Billingham TM	<ul style="list-style-type: none"> <li>• we have various prayer ministries, including a prayer communication list via our mobile phones. A coordinator receives and sends out</li> </ul>	<ul style="list-style-type: none"> <li>• We have tried an experiment with different types of church such as Cafe church, together at four, and various other initiatives..</li> </ul>	<ul style="list-style-type: none"> <li>• We had a full-time youth worker working in Billingham, who had an extensive ministry in schools, both primary and secondary.</li> </ul>	<ul style="list-style-type: none"> <li>• working as previously expressed to support the food bank in Billingham. This area needs more work in progress.</li> </ul>



	<p>prayer requests to those in this particular ministry in the parish. This is for people in whatever variety need prayer, whether it's healing, support from God and fellow church members and bereavement.</p> <ul style="list-style-type: none"> <li>• We have a bereavement team who contact those who have had funerals in the parish and particularly those who the funeral minister feels extra support.</li> <li>• Before church on a Sunday there is the opportunity for prayer and after if necessary.</li> <li>• We are in the process of enabling laypeople to be more involved in ministry with various different opportunities to</li> </ul>	<ul style="list-style-type: none"> <li>• We did this six weeks Lent course based on the Durham diocese The Way Ahead material.</li> <li>• There is also in the planning process to lead more Bible study looking at the book of Romans or line by line understanding of the creed.</li> <li>• Looking at the provision of church buildings in Billingham and trying to rationalise the need for buildings.</li> </ul>	<p>Unfortunately she has moved on and we are considering the future along with Youth for Christ.</p> <ul style="list-style-type: none"> <li>• We have an "Open The Book Teams" in the parish in various primary schools.</li> <li>• Youth leader is also exploring various different modes of church within people during the week.</li> <li>• We regularly have a staff meeting the needs of the parish are both prayed for and discussed.</li> <li>• Play &amp; Praise x2</li> <li>• Messy Church</li> <li>• Junction Youth meet regularly with our Youth leader in St Aidan's to discuss matters of faith and contemporary issues of society</li> </ul>	
--	--	---	--	--

	<p>show church in different varieties, e.g. "Together at Four " "The Together Group. "</p> <ul style="list-style-type: none"> <li>• During Lent, all the churches in Billingham were encouraged to give to the food bank where we had a special service where the Billingham bikers came and collected food raised.</li> </ul>			
Egglescliffe	<ul style="list-style-type: none"> <li>• Continuing courses during Advent and Lent (Waymark this year)</li> <li>• We have undertaken two Alpha courses</li> <li>• We did the Alpha 'Prayer Course'</li> <li>• Continuing with small group bible studies</li> <li>• Encouraging bible study and prayer at all meetings</li> </ul>	<ul style="list-style-type: none"> <li>• Developing a welcoming and hospitable ethos (lunch club/community coffee)</li> <li>• Developing the leadership skills within the laity</li> <li>• Alpha</li> <li>• Thy Kingdom come activities</li> </ul>	<ul style="list-style-type: none"> <li>• Working with a Youth for Christ worker (and the rest of the YFC team)</li> <li>• 'Lighthouse' After school club for year 5-6</li> <li>• Life Group for year 6 (incorporating youth Alpha)</li> <li>• School assemblies (primary &amp; secondary)</li> <li>• Prayer space events three times a year.</li> <li>• Church young people's Life Group</li> </ul>	<ul style="list-style-type: none"> <li>• Active mother's union that supports various initiatives</li> <li>• Offering support for 'A Way Out' and 'The Mary Thompson fund'</li> <li>• Responding to needs as they are brought to our attention.</li> <li>• Keeping in touch with other community activities addressing this issue</li> </ul>

			<ul style="list-style-type: none"> <li>Encouraging our Young People to attend the monthly 'Refresh' Youth event and café church.</li> </ul>	
Holy Trinity with St Mark	<p>I was appointed to Holy Trinity to enable the church to develop discipleship and we made a conscious decision to include ways in which we could do that as part of the church annual activities. Since then the Shared Ministry Team and I plan and lead together 3-4 courses per year. Some of the shelf courses, like pilgrim, and others I have written myself, based on films eg, Les Mis, Kings speech, Lady in the Van, the Way etc. We have seen a marked difference in the lives of our church as a result.</p>	<p>We have run ALPHA 4 times now including youth ALPHA. We have made a deliberate effort to look at how we can reach out to our community, we have cafe church once a month, and encouraging the culture of invitation. We are a very sociable church with lots going on which gives us a wonderful opportunity to connect with our wider community. Our baptisms are held in our morning service so that we give our young families a real welcome to church.</p>	<p>For 3 years we have had YFC interns working with us in the parish and our 3 C of E schools. Last year we took the decision to make our youth and children's work a priority and committed ourselves as a congregation to employ our own Youth Pastor. We have enjoyed seeing the benefits of her work in our schools and in church on a Sunday morning. We have a mission team from the USA come to join us each summer to work alongside us in our mission to schools, with after school activities and small teams working in our 3 schools during the day. The mission week finishes with a BBQ in the grounds of the</p>	<p>We do lots of small things to address poverty. Holy Trinity are generous and compassionate people, responding to appeals for support which is always encouraging. We support our local churches in the deanery who we know struggle financially. We run a weekly lunch club which is attended mainly by the elderly, but recently young mums with their children have started to come along too, as well as a number of staff from our school. We try as much as we can to look after those in our community and support them as much as we can.</p>

			church and last year we had 450 people attend, the response was amazing, and one of the team gave a short testimony/address.	
Stockton Country Parish	<i>Information awaited</i>	<i>Information awaited</i>	<i>Information awaited</i>	<i>Information awaited</i>
St Paul's	<i>Information awaited</i>	<i>Information awaited</i>	<i>Information awaited</i>	<i>Information awaited</i>
Stockton Parish Church	<ul style="list-style-type: none"> <li>• Most ministry is led by lay people. Significant lay involvement in services – leaders, preachers)</li> <li>• Midweek groups established with a plan to develop missional discipleship groups across the church</li> <li>• Mentoring of individuals</li> </ul>	<ul style="list-style-type: none"> <li>• Alpha course running 3 times per year (once a term) linked to baptism services</li> <li>• Midweek lunchtime service attracting many who have not been attending on Sundays</li> <li>• Clear target to pay for the cost of ministry through parish share by 2024</li> </ul>	<ul style="list-style-type: none"> <li>• Youth team engaged in 3 schools across the town.</li> <li>• This year we have our first 'homegrown' youth leader, supplemented by USA volunteers</li> <li>• Schools ministry training day offered</li> </ul>	<ul style="list-style-type: none"> <li>• Eden Team established in Mill Lane</li> <li>• Support to Salvation Army foodbank</li> <li>• Significant involvement with asylum, particularly Christian converts.</li> <li>• All we do is underpinned by our work within the Teesside wide unity movement: Transforming Teesside Together.</li> </ul>

## 7.Statistics for Mission 2018

**Remembering** *“Not everything that counts can be counted, and not everything that can be counted counts.”*

	Diocese 2017	Diocese 2018	Diocese change 2017-18		Stockton 2017	Stockton 2018	Stockton change 2017-18		Stockton as % of Diocese (include Cathedral) 2018
Usual Sunday, Adult	10,684	10,158	-4.9%		1142	1094	-4.2%		10.8%
Usual Sunday, Child	1,262	1,147	-9.1%		179	148	-17.3%		12.9%
Usual Sunday, All Age	11,946	11,305	-5.4%		1321	1242	-6.0%		11.0%
Weekly Average, Adult	16,501	15,722	-4.7%		1548	1659	7.2%		10.6%
Weekly Average, Child	2,198	2,025	-7.9%		319	313	-1.9%		15.5%
Weekly Average, All Age	18,699	17,747	-5.1%		1867	1972	5.6%		11.1%
Sunday Average, Adult	12,707	12,128	-4.6%		1273	1346	5.7%		11.1%
Sunday Average, Child	1,668	1,565	-6.2%		205	209	2.0%		13.4%
Sunday Average, All Age	14,375	13,693	-4.7%		1478	1555	5.2%		11.4%
Worshipping Community, Total	19,460	19,198	-1.3%		1959	1995	1.8%		10.4%
Worshipping Comm., aged 0-17	3,928	3,318	-15.5%		382	412	7.9%		12.4%
Worshipping Comm., aged 18-69	8,238	8,243	0.1%		933	975	4.5%		11.8%
Worshipping Comm., aged 70+	7,294	7,638	4.7%		643	608	-5.4%		8.0%
Worshipping Comm., aged 0-17	20%	17%			19%	21%			
Worshipping Comm., aged 18-69	42%	43%			48%	49%			
Worshipping Comm., aged 70+	37%	40%			33%	30%			
Population (estimates)		1,465,795				154,032			10.5%

			2017	2017		2017	2017	31.12.17	31.12.17		
			Unrestricted			Restricted					
	Share remitted 2018	Pledge 2019	Income	Expend	surplus/(deficit)	income restrict	Expend Restri	Unrestricted funds	Restricted funds		
Upper Skerne	£ 78,750	£ 76,046	£ 156,162	£ 149,218	6,944.00	£ 2,622	£ 4,506	£ 126,735	£ 83,718		
Stockton-on-Tees: St Peter	£ 65,004	£ 68,256	£ 94,554	£ 104,731	-10,177.00	£ 2,273	£ 1,359	£ 197,807	£ 3,547	note 1	
St John's Elton	£ 8,004	£ 8,412	£ 18,419	£ 13,326	5,093.00	£ 670	£ -	£ 14,752	£ 1,426		
Norton: St Mary the Virgin	£ 44,880	£ 44,880	£ 84,609	£ 84,307	302.00	£ 4,070	£ 19,581	£ 33,042	£ 9,800		
Norton: St Michael & All Angels	£ 11,464	£ 12,151	£ 33,688	£ 32,873	815.00	£ 12	£ -	£ 27,983	£ 51,636		
St Mary's Long Newton	£ 14,900	£ 15,797	£ 27,882	£ 26,438	1,444.00	£ 13,710	£ 17,104	£ 13,423	£ 5,493		
All Saints' Preston-on-Tees	£ 92,040	£ 96,642	£ 241,894	£ 213,848	28,046.00	£ 114,686	£ 2,200	£ 25,647	£ 72,981		
Parish Church, Stockton-on-Tees	£ 29,375	£ 32,318	£ 92,564	£ 99,892	-7,328.00	£ 49,876	£ 28,071	£ 3,364	£ 21,805		
Holy Trinity with Saint Mark, Billingham	£ 55,650	£ 58,433	£ 159,336	£ 252,689	-93,353.00	£ 2,326	£ -	£ 86,569	£ 69,311		
Stockton Country Parish	£ 23,000	£ 22,500	£ 67,217	£ 91,803	-24,586.00	£ 46,870	£ 1,320	£ 26,169	£ 116,202		
Stockton Christchurch	£ 29,386	£ 19,000	£ 31,841	£ 46,636	-14,795.00	£ 3,788	£ 4,666	£ 3,864	£ 342		
Stockton-onTees: St Paul	£ 10,500	£ 8,000	£ 30,581	£ 29,469	1,112.00	£ 12,300	£ 9,135	£ 6,647	£ 19,353		
St John's Egglecliffe	£ 34,293	£ 37,500	£ 61,697	£ 67,014	-5,317.00	£ 3,635	£ -	£ 6,975	£ 8,589		
	£ 581,246	£ 583,935									
DATA warning - data only as good as data entry on parish returns											
1. building project in development - hence high unrest balance											